

---

User Manual v1

# USB PD FW Update Fixture (For RT7880 Update)

---

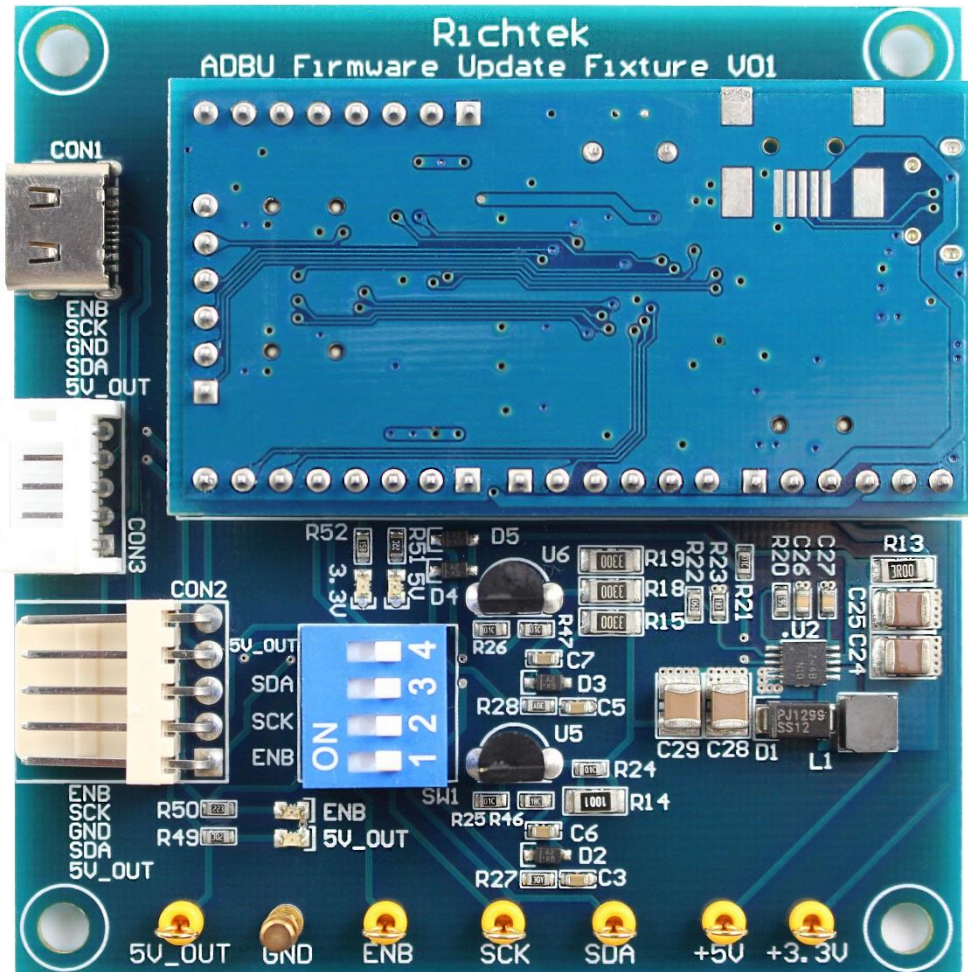
October 2020

[www.richtek.com](http://www.richtek.com)

## Table of Contents

1. RTUniversal Programming Tool Setup .....	3
2. Programming Environment Setup .....	6
3. RT7880 I <sup>2</sup> C OnLineUpdate Program.....	7
4. RT7880 I <sup>2</sup> C OnLineUpdate Verify .....	11
More Information.....	15
Important Notice for Richtek Reference Design .....	15

## 1. RTUniversal Programming Tool Setup



### Step 1. (If NB had installed it. Skip this step.)

- NB must install RTBridgeboardUtilitiesV137.exe (It can't use old version)
- The RTBridgeboardUtilitiesV137 is USB driver.
- RTBridgeboardUtilities download path :  
[www.richtek.com/~media/Design%20Tools/RTBridgeboardUtilities.ashx](http://www.richtek.com/~media/Design%20Tools/RTBridgeboardUtilities.ashx)

### Step 2. Decompressed file (First time use or ProgrammingTool Version update)

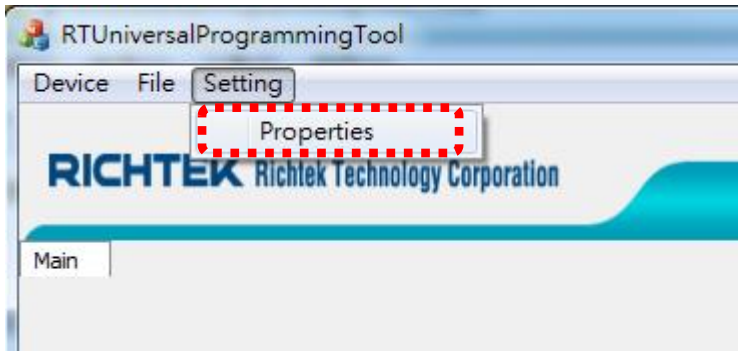
- The RTUniversalProgrammingTool is firmware programming software.
- RTUniversalProgrammingTool download path :  
[www.richtek.com/~media/Design%20Tools/RTUniversalProgrammingTool.ashx](http://www.richtek.com/~media/Design%20Tools/RTUniversalProgrammingTool.ashx)
- Decompressed RTUniversalProgrammingTool file

### Step 3.

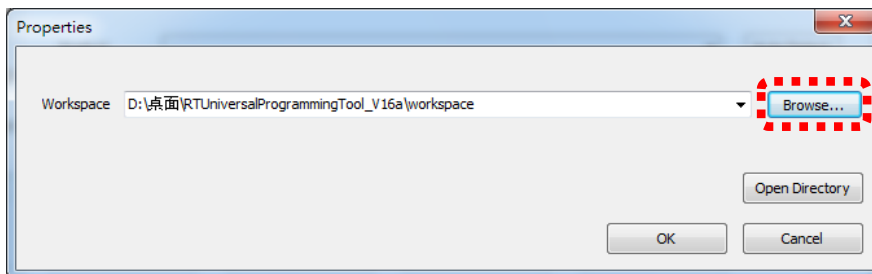
- Execute RTUniversalProgrammingTool.exe

## Step 4. Set Workspace (First time use or ProgrammingTool Version update)

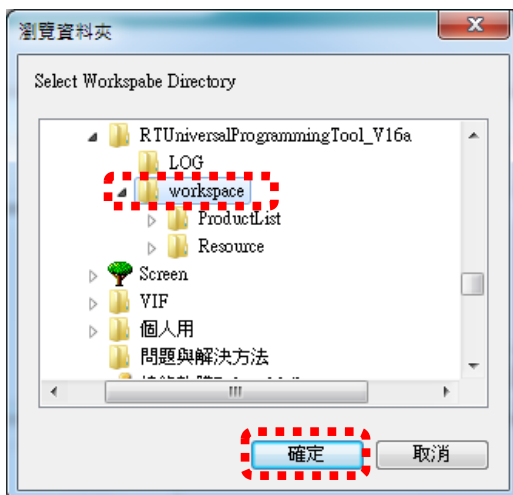
- Execute Setting Properties



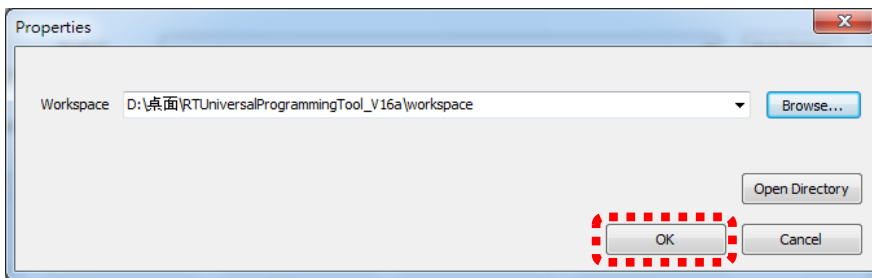
- Set up Workspace folder. Press Browse...



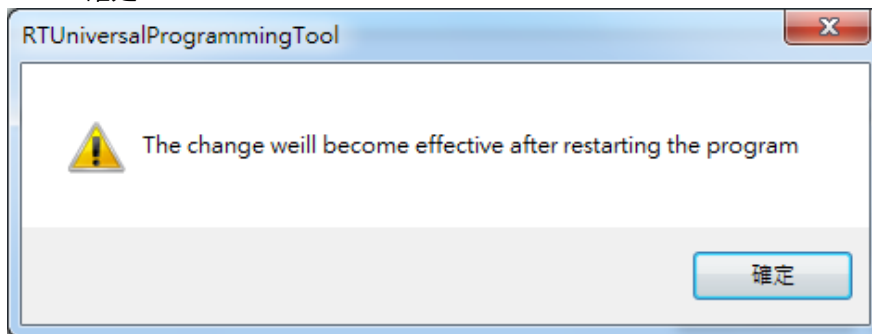
- Fine the current version Workspace and Press 確定.



- Press OK



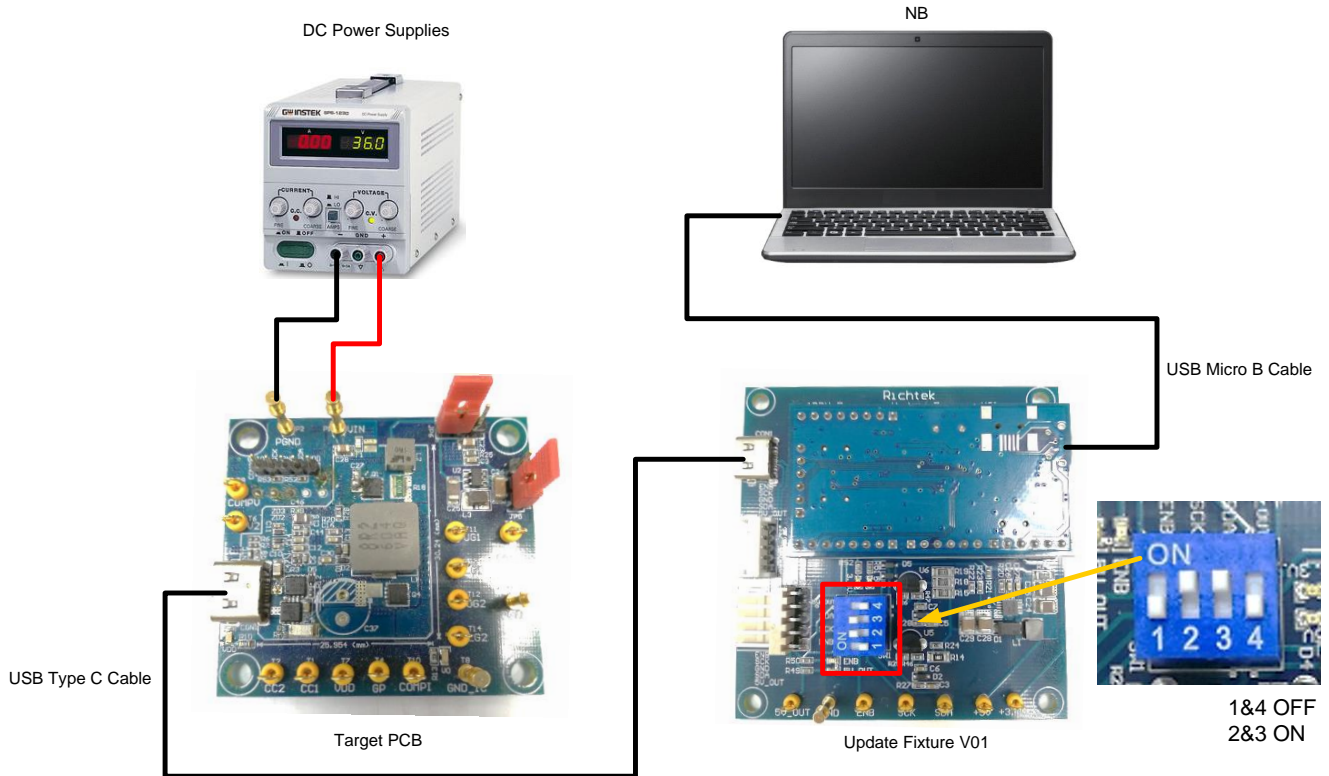
- Press 確定.



- Close RTUniversalProgrammingTool
- Rerun RTUniversalProgrammingTool

## 2. Programming Environment Setup

**Programming Environment Architecture Diagram (Photo is an example)**



### 3. RT7880 I<sup>2</sup>C OnLineUpdate Program

#### Step 1.

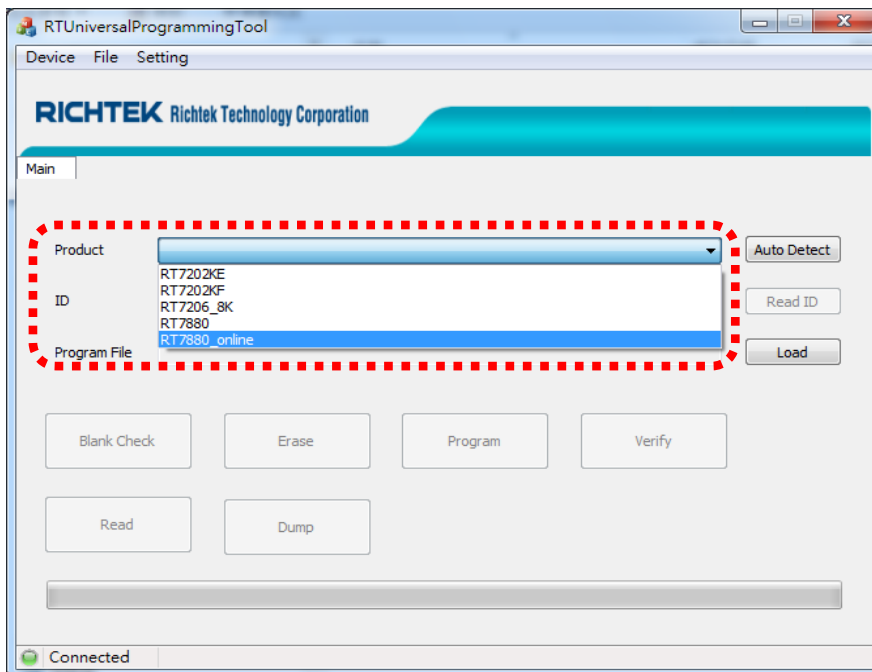
- Target PCB connect to Update Fixture V01
- Target PCB Power On

#### Step 2.

- Run RTUniversalProgrammingTool.exe

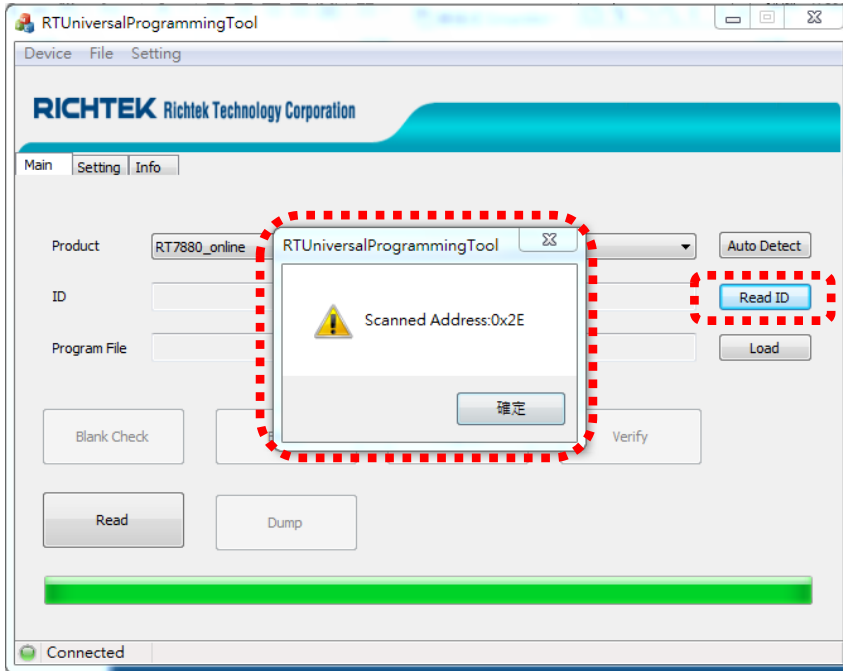
#### Step 3.

- Product select RT7880\_online



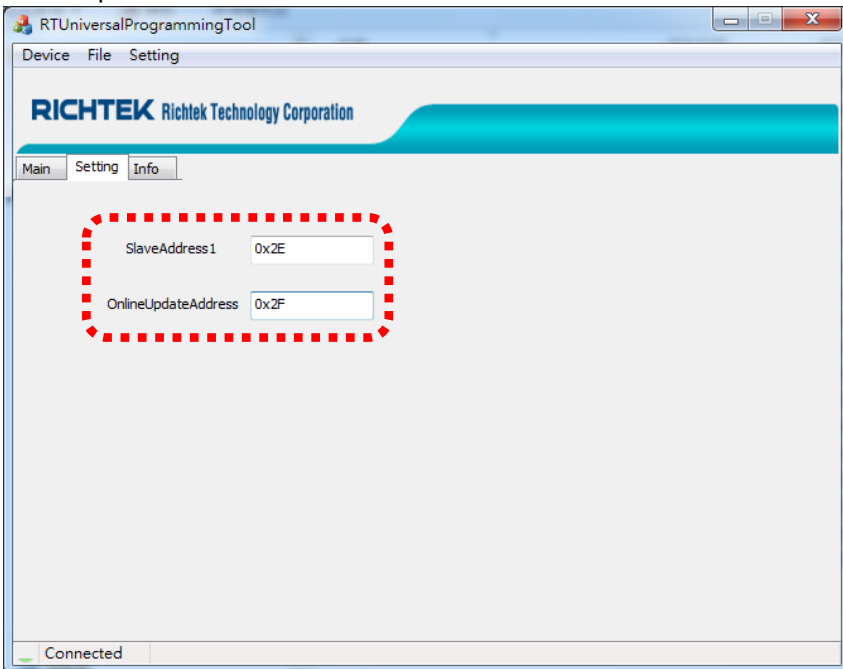
**Step 4. Scanned Address**

- Press Read ID (Programming tool will get update address)



**Step 5. Setting Address**

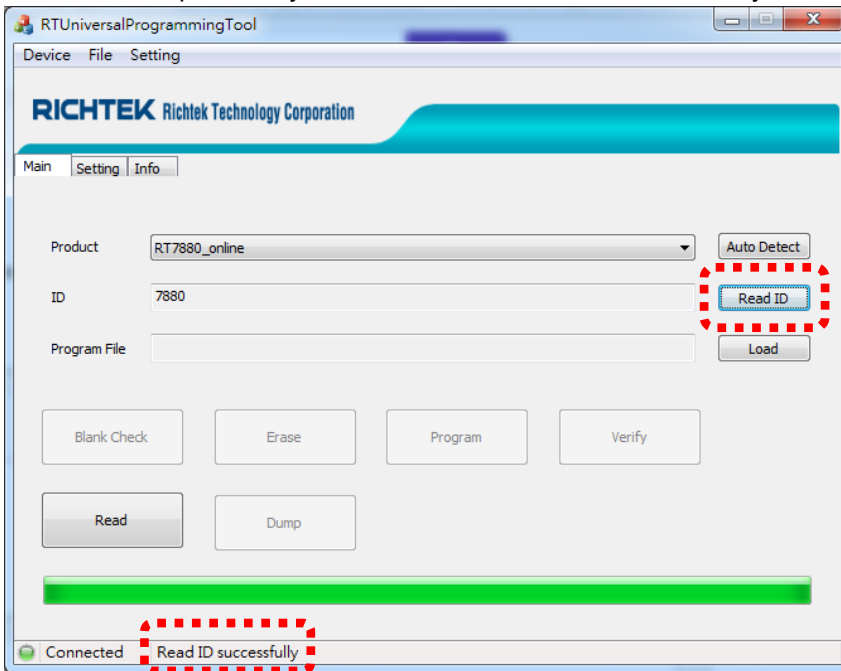
- Key in Scanned Address : 0x2E into SlaveAddress1 field
- OnlineUpdateAddress field = SlaveAddress1 value + 1





**Step 6.**

- Press Read ID
- If address setup correctly. Tool notification “Read ID successfully”

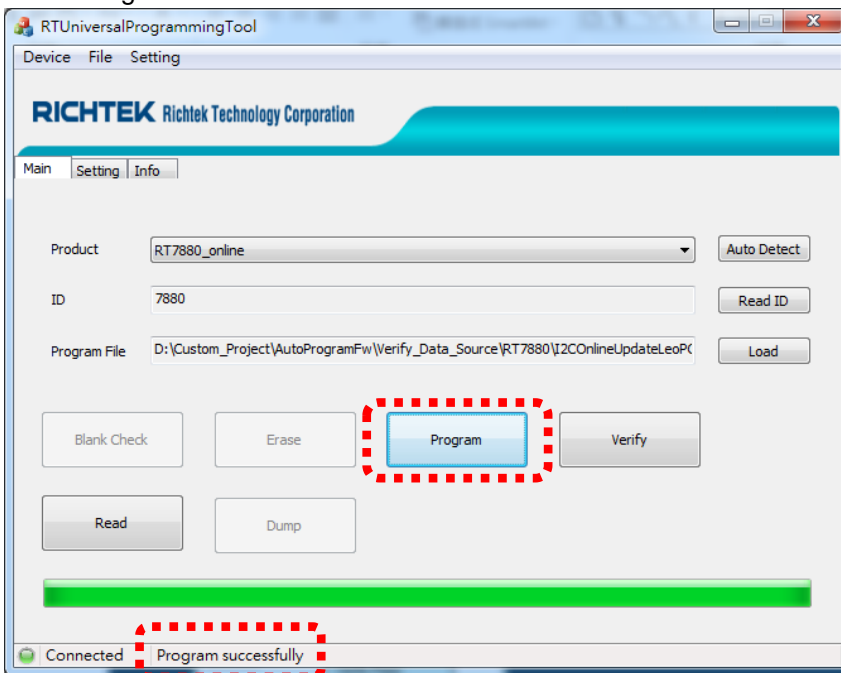


**Step 7. Load RRF file**

- Press Load to load rrf file

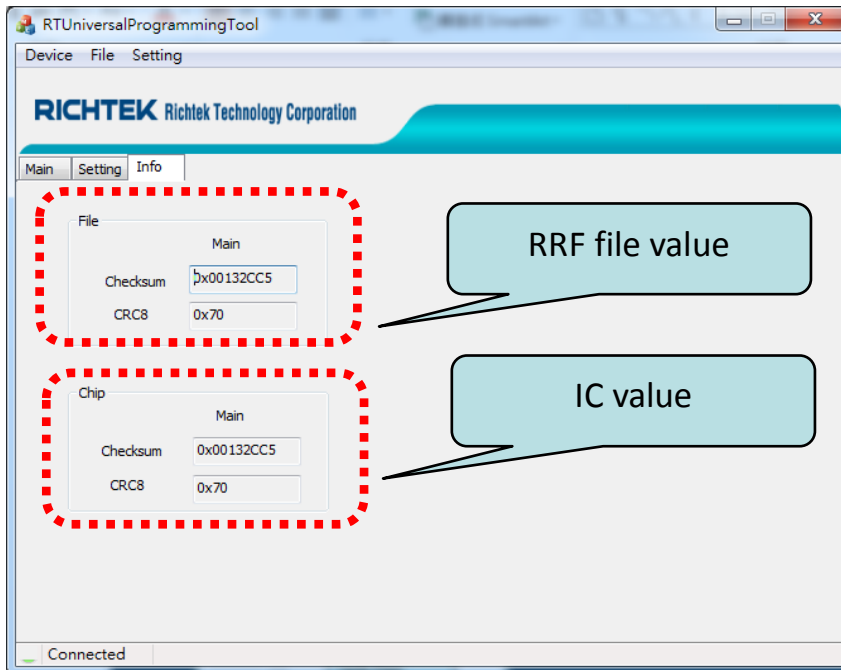
**Step 8.**

- Press Program



**Step 9.**

- Switch to Info sheet show File/Chip Checksum and CRC8 value



- Note : If SlaveAddress1 and OnlineUpdateAddress setting are correctly. Step 4. ~ 6. can be ignored.

## 4. RT7880 I<sup>2</sup>C OnLineUpdate Verify

### Step 1.

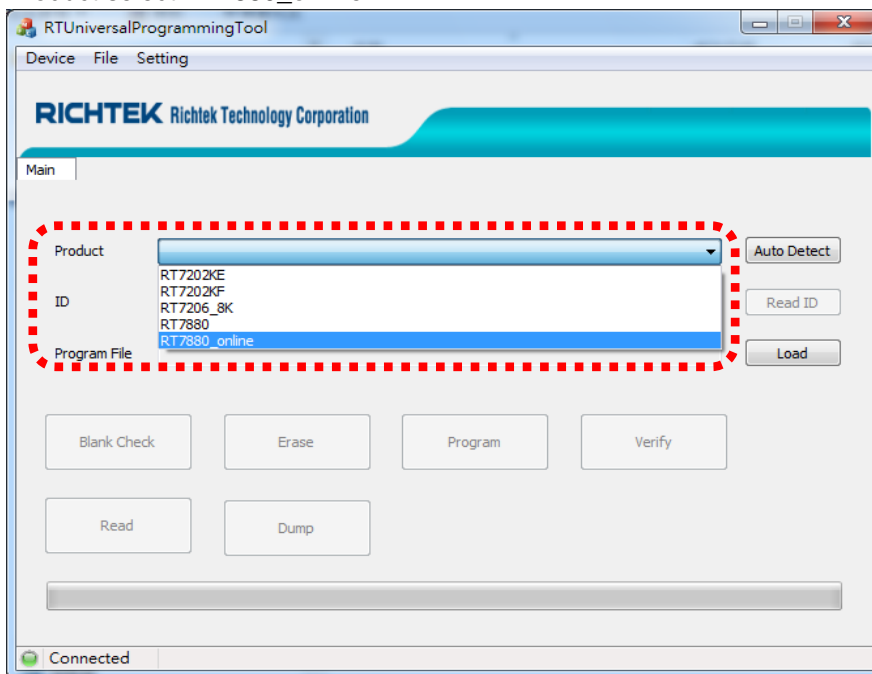
- Target PCB connect to Update Fixture V01
- Target PCB Power On

### Step 2.

- Run RTUniversalProgrammingTool.exe

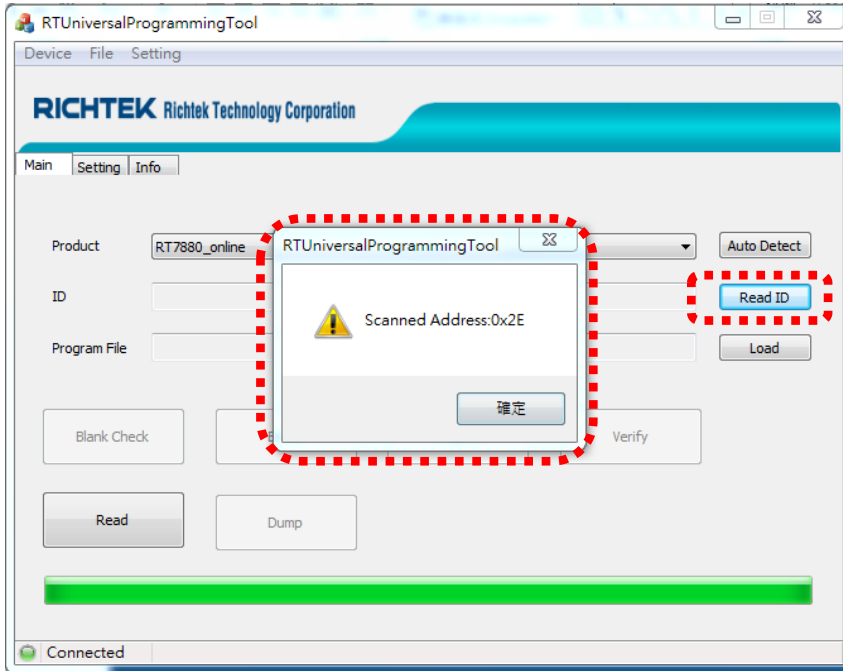
### Step 3.

- Product select RT7880\_online



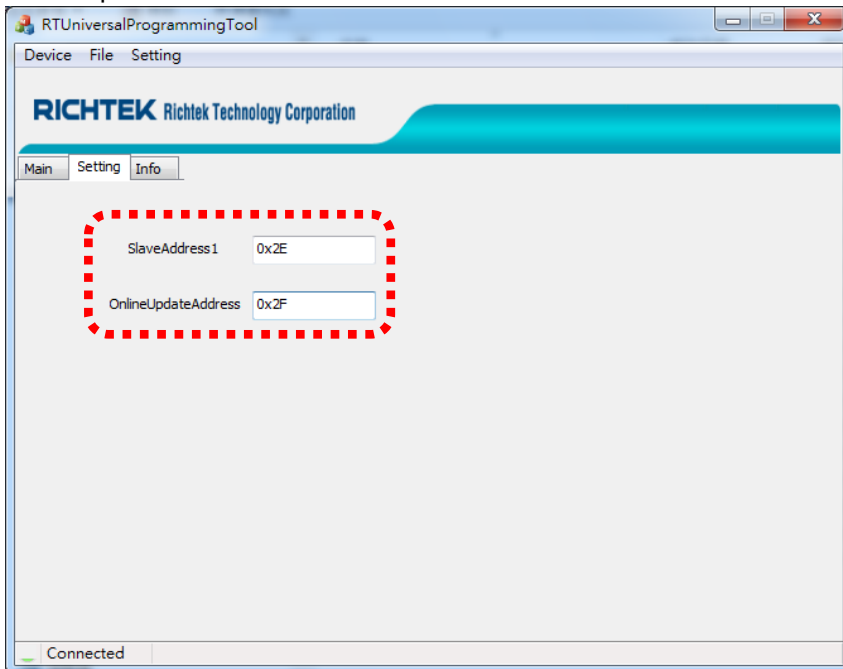
**Step 4. Scanned Address**

- Press Read ID (Programming tool will get update address)



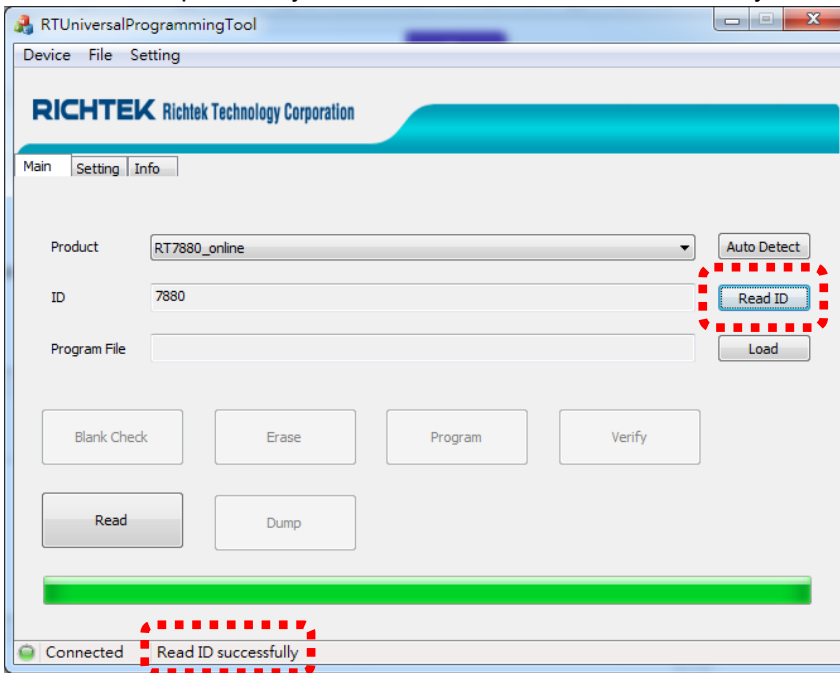
**Step 5. Setting Address**

- Key in Scanned Address : 0x2E into SlaveAddress1 field
- OnlineUpdateAddress field = SlaveAddress1 value + 1



**Step 6.**

- Press Read ID
- If address setup correctly. Tool notification “Read ID successfully”

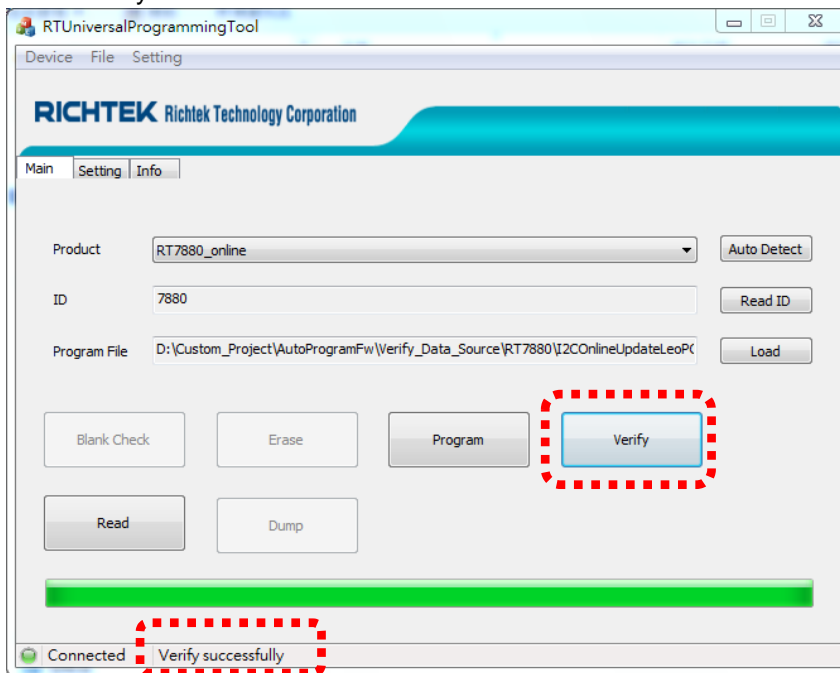


**Step 7. Load RRF file**

- Press Load to load rrf file

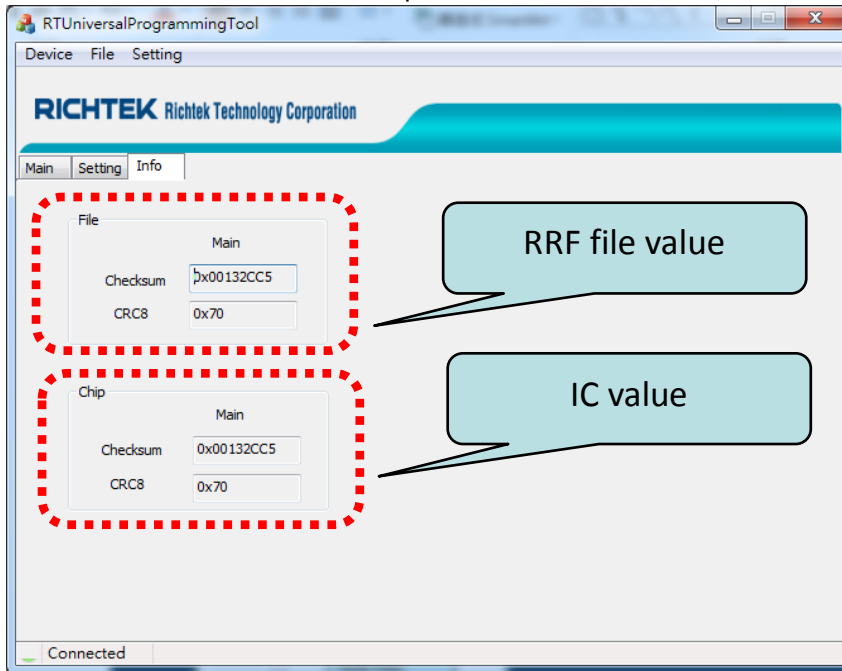
**Step 8.**

- Press Verify



**Step 9.**

- Switch to Info sheet show File/Chip Checksum and CRC8 value



- Note : If SlaveAddress1 and OnlineUpdateAddress setting are correctly. Step 4. ~ 6. can be ignored.

### ***More Information***

For more information, please find the related datasheet or application notes from Richtek website <http://www.richtek.com>.

### ***Important Notice for Richtek Reference Design***

THIS DOCUMENT IS FOR REFERENCE ONLY, NOTHING CONTAINED IN THIS DOCUMENT SHALL BE CONSTRUED AS RICHTEK'S WARRANTY, EXPRESS OR IMPLIED, UNDER CONTRACT, TORT OR STATUTORY, WITH RESPECT TO THE PRESENTATION HEREIN. IN NO EVENT SHALL RICHTEK BE LIABLE TO BUYER OR USER FOR ANY AND ALL DAMAGES INCLUDING WITHOUT LIMITATION TO DIRECT, INDIRECT, SPECIAL, PUNITIVE OR CONSEQUENTIAL DAMAGES.